

M-Bio

Portable Fingerprint and RFID Time & Attendance Terminal



Wi-Fi



Cloud



Battery



125 KHz EM,
13.56 MHz MiFARE



Bluetooth



M-bio is a portable fingerprint and RFID Time & Attendance terminal featuring Anviz next generation AFOS touch active fingerprint sensor and rechargeable Li-ion Battery. Standard with Wi-Fi and Bluetooth function, supports CrossChex Cloud and CrossChex Mobile APP. Meanwhile, the M-bio based on embedded Linux system platform has internal Web Server to self-management of the device.

M-Bio

Portable Fingerprint and RFID Time & Attendance Terminal

■ Features



Cloud Application

The M-bio just connect to the internet to enjoy unlimited cloud services from CrossChex Cloud Application.



Contactless Mobile APP

The Bluetooth communication with CrossChex Mobile APP to contactless personnel verification and device management.



Portable Application

Compact design with 1.0-inch OLED display and rechargeable Li-ion Battery ensuring up 4 hours working.



Standalone Internal Web Server

The internal web Server ensure the device self-management and easily using.



The New generation AFOS Fingerprint Sensor

The New generation AFOS 518 dark background fingerprint sensors improve 70% fingerprint identification efficiency and reduce capture error rate in various environments.



High Speed CPU

The New 1.0 Ghz high speed processor ensure the 1:3000 comparison time less than 0.5 seconds.



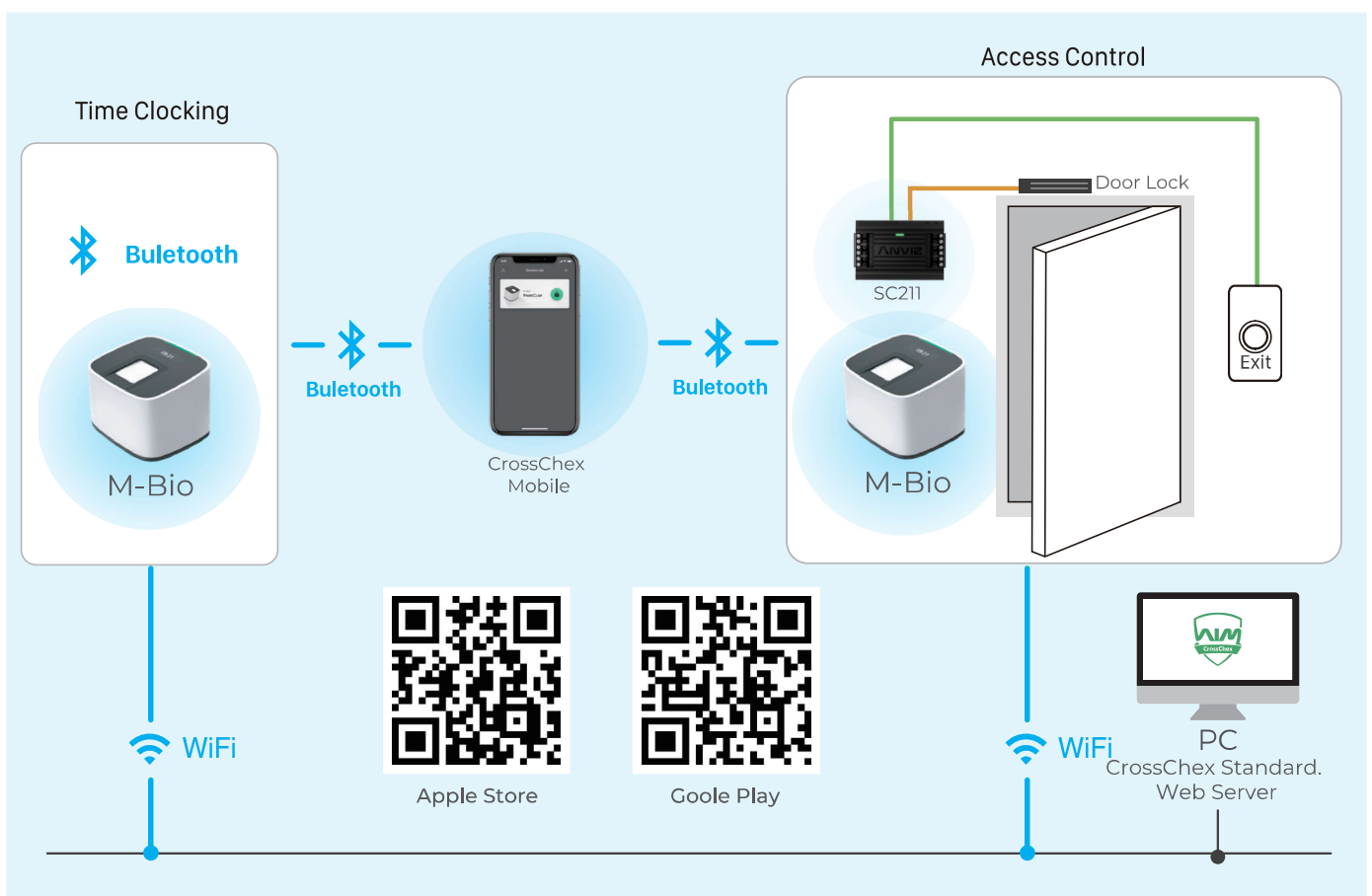
EM&Mifare 2 in 1 RFID Card Module

The EM&Mifare 2 in 1 RFID Card module is compatible with mostly RFID cards' standards.

■ Key Specifications

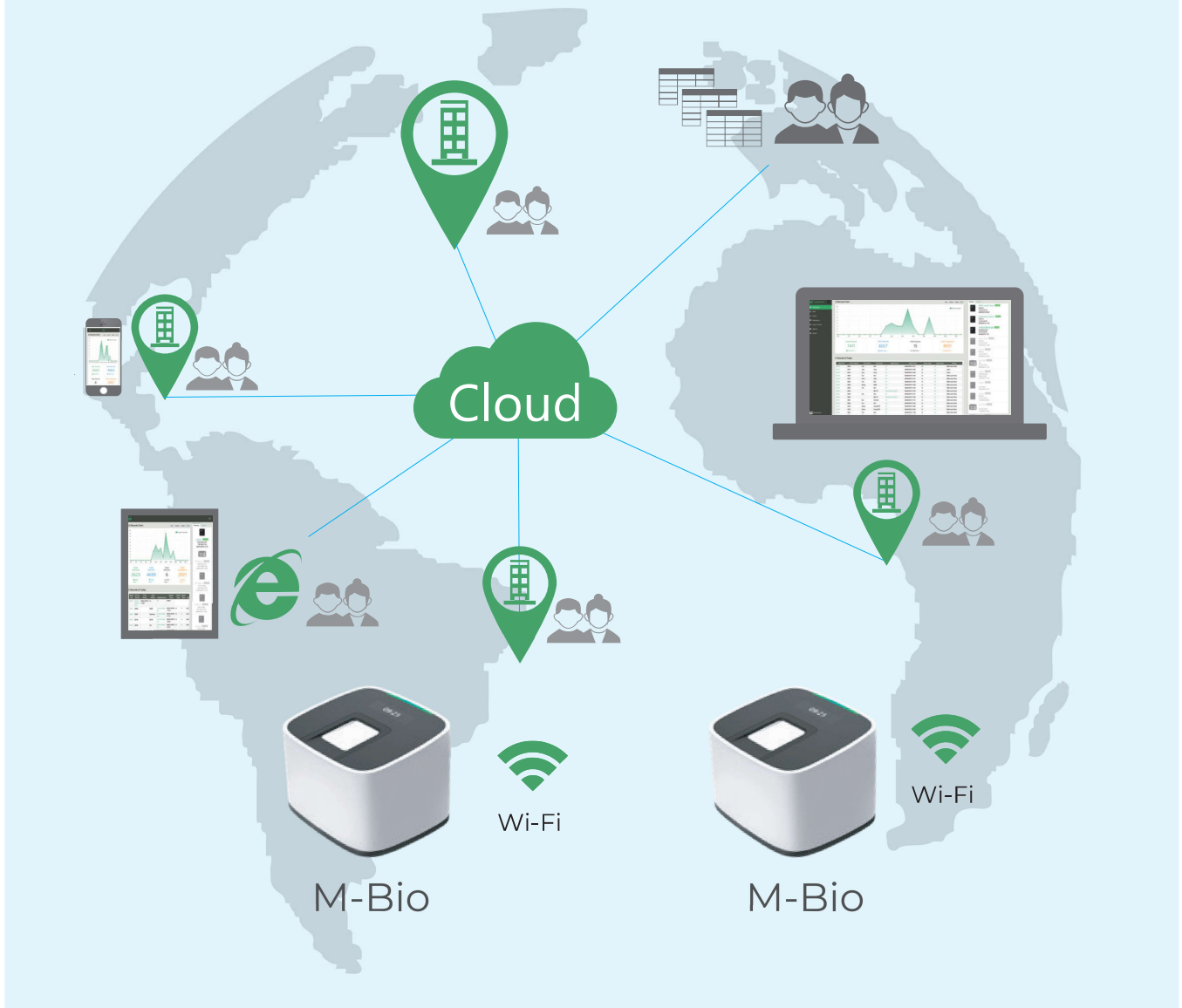
CPU	1.0GHz
User Capacity	3,000
Fingerprint Capacity	3,000
Record	100,000
Identification Mode	Fingerprint, Card
Identification Speed	<0.5s (1:3000)
Communication	WiFi, Bluetooth
Web Server	Support
RFID Card	EM&Mifare 2 in 1
Card Reading Distance	2 ~ 5cm(0.79 ~ 1.99")
Battery	600mAh up 4 hours working
Power	DC5V Power over USB
OperatingTemperature	-25°C(-13°F) to 45°C(-113°F)
Operating Humidity	10% to 90%

■ System Configurations



■ System Configurations

Remote Cloud Management



CrossChex Cloud Server link

Worldwide Server: <https://us.CrossChexcloud.com/>

Asia-Pacific Server: <https://ap.CrossChexcloud.com/>