

FaceDeep 5 ^{IRT}

AI Based Smart Face Recognition Terminal with Infrared Thermal Temperature Detection



Infrared Thermal
Temperature
Detection



Liveness Face
Detection

AI

AI Deep Learning
Architecture



125 KHz EM,
13.56 MHz MiFARE,
DESFire



Mask
Detection



- FaceDeep 5 with Infrared Thermal Temperature Detection Camera, specifically designed to rapidly scan users with elevated body temperature
- Temperature screening with thermographic technology (32x32 pixels), more accurate and faster to catch up than others with thermopile technology (single point) only
- New ideal touchless solution for the people to access control on the entrance or record time attendance and simultaneously check temperature and mask-wearing without having to touch a terminal or gate
- Built-in IR and visual cameras integrated with Anviz's unique BioNANO[®] algorithm to produce the best in class live face recognition performance
- Mask not-wearing alert

FaceDeep 5 ^{IRT}

AI Based Smart Face Recognition Terminal with Infrared Thermal Temperature Detection

■ Features



Infrared Thermal Temperature Detection

IRT Temperature Detection Camera, specifically designed to rapidly scan users with elevated body temperature



1GHz Linux Based Processor

The new Linux based 1GHz processor ensures the 1:50,000 comparison time less than 0.3 second.



Wi-Fi Flexible Communication

Wi-Fi function can realize stable wireless communication and realize flexible installation of equipment.



Liveness Face Detection

Live face recognition based on infrared and visible light.



Wide Angle Camera

The ultra-wide-angle camera enables fast face recognition.



IPS Full Screen

The colorful IPS screen ensures the best interaction and user experiences and can also provide clear notifications to the users.



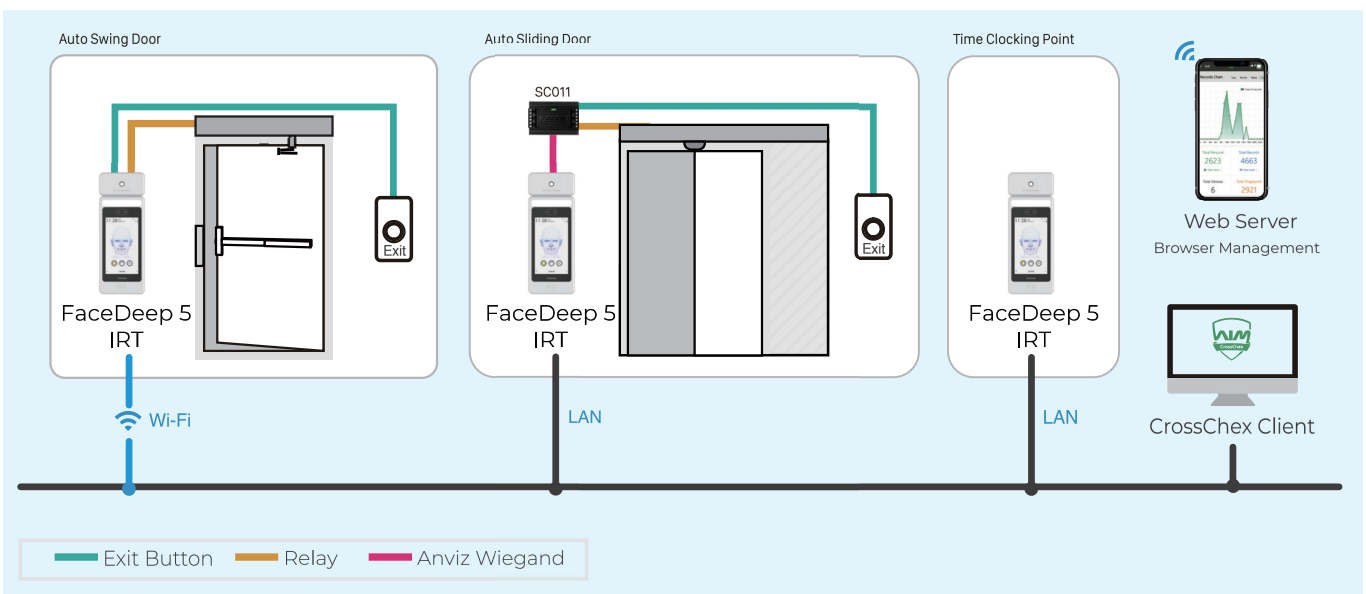
Cloud Application

The web based cloud application let you access to the device by any mobile terminal from anytime and anywhere.

■ Key Specifications

Max. Users	50,000
Max. Cards	50,000
Max. Logs	100,000
Communication	TCP/IP, RS232, Wi-Fi
Identification Mode	Face, Password, RFID Card
Identification Distance	0.3~2 M
Identification Speed	<300ms
RFID Card	125 KHz EM, 13.56 MHz: MiFARE, DESFire
CPU	Dual Core Linux Based 1GHz CPU with Enhanced AI Computing Power
Infrared Thermal Temperature Detection Module	Detect Distance 30cm~100cm (11.8inch~19.7inch) Accuracy $\pm 0.3^{\circ}\text{C}$ (0.54°F)
Temperature Range	-10°C (14°F) - 50°C (122°F)
Humidity	20% to 90%
Power	DC12V 3A
IP Ratings	IP65(*For Deep5 Terminal Only, IRT thermo module is not included.)
Camera Angle Range for Verification	74.38° (Visual), 67.57° (Infrared)

■ System Configurations



*Disclaimer: Anviz's products listed herein are not designed for medical devices and not intended for use in the diagnosis of disease or other conditions. When configured correctly, Anviz's products listed herein can identify individuals with skin-surface temperature relative to a preset figure but should not be solely or primarily relied upon to diagnose any disease. Anviz's products must be used in accordance with local laws and regulations.

ANVIZ
POWERING A SMARTER WORLD

Anviz Global Inc.

41656 Christy Street Fremont, Fremont, CA, 94538

Tel: 1-510-573-6552 | Toll-free: 1-855-268-4948 | sales@anziv.com | www.anziv.com

©2020 Anviz Global Inc. Anviz and identifying product names and numbers herein are registered trademarks of Anviz Global Inc. All non-Anviz brands and product names are trademarks or registered trademarks of their respective companies. Product appearance, build status and/or specifications are subject to change without notice.