



Statement

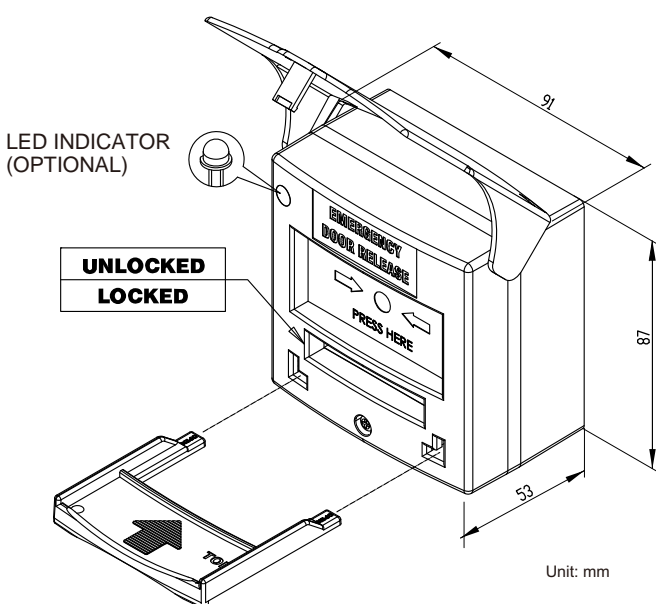
Resettable call point, with double poles change over contacts from N/C to N/O. The main function is to override the electrical locking/release devices in case of emergency. With Key to reset the switch.

The resettable call point comes with hinged front cover to prevent the unit from activating randomly. Lock/Unlock instructed plates to show the status of the switch and also with the optional LED version to indicate the direction of the call point.

Specifications

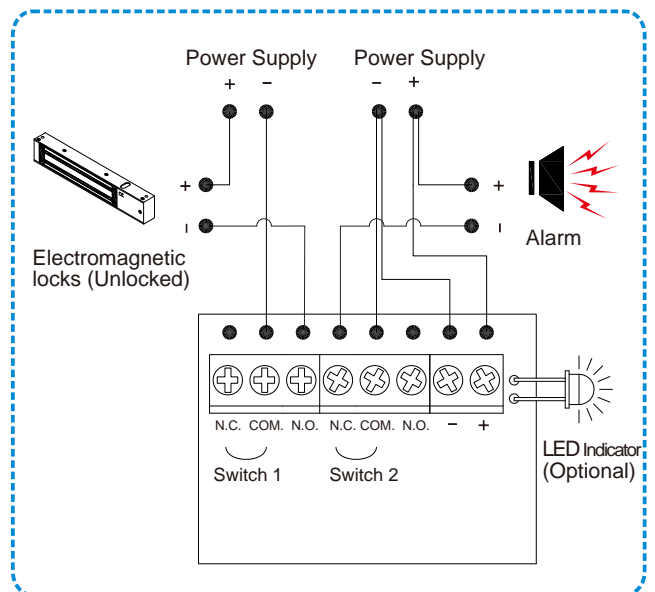
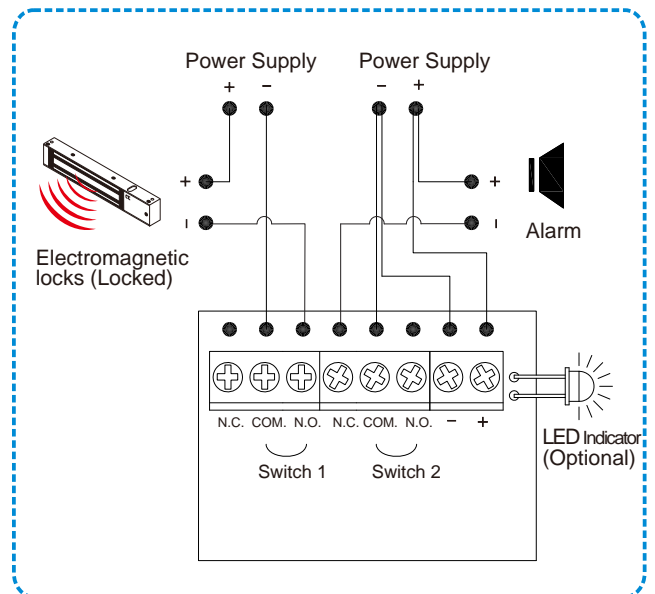
Dimensions: 87x91x53 mm
 LED indicator (Optional)
 Switch rating: 5A/125/250 VAC
 Switch: Double pole

Dimension



Application

(CP-32_LED Series)



Warranty

The product is warranted against defects in material and workmanship while used in normal service for a period of 1 year from the date of sale to the original client. The GEM policy is one of continual development and improvement; therefore GEM reserves the right to change specifications without notice.

GIANNI INDUSTRIES, INC.