



Magnetic Lock Series

SWC-280ASW
SWC-500ASW
SWC-SL1200A

280KG(600Lbs)

Single Door Magnetic Lock (Waterproof)



Model	SWC-280ASW
Lock Size	210L*42W*28.5H(mm)
Armature Plate Dimension	185L*38W*12H(mm)
Holding Force	280kg(600Lbs)
Door signal	Yes
Lock signal	No
Input Voltage	DC12V or DC24V
Working Current	12V/460mA or 24V/220mA
Door Type Applicable	Wooden / Glass / Metal / Fireproof door
Security Type	Power off to open
Weight	2.3kg

500KG(1200Lbs)

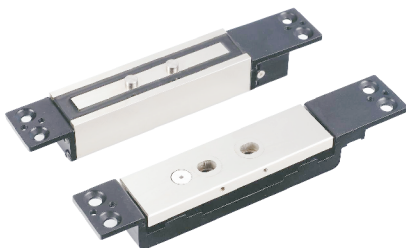
Single Door Magnetic Lock (Waterproof)



Model	SWC-500ASW
Lock Size	240L*63.5W*43H(mm)
Armature Plate Dimension	185L*61W*16H(mm)
Holding Force	500kg(1200Lbs)
Door signal	Yes
Lock signal	No
Input Voltage	DC12V or DC24V
Working Current	12V/460mA or 24V/220mA
Door Type Applicable	Wooden / Glass / Metal / Fireproof door
Security Type	Power off to open
Weight	5kg

1200KG(2600Lbs)

Shear Lock



Model	SWC-SL1200A
Lock Size	182L*30W*25H(mm)
Armature Plate Dimension	182L*30W*23H(mm)
Holding Force	1200kg(2600Lbs)
Door signal	Yes
Lock signal	No
Input Voltage	DC12V
Working Current	12V/220mA
Door Type Applicable	Wooden / Glass / Metal / Fireproof door
Security Type	Power off to open
Weight	1kg

* Weight and Size are Only Approximation and May be Modified Without Prior Notification.



www.smartworld.ae



Note: Please carefully read User Manual before usage