



Magnetic Lock Bracket Series

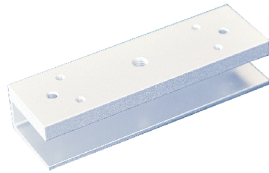
SWC-350L/UB/ZL
SWC-600L/UB/ZL/GB/FB
SWC-800L/UB/ZL
SWC-1200L/ZL

Electro-magnetic Lock Bracket (L Type)



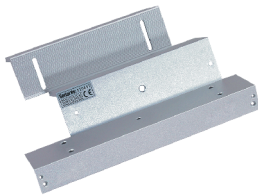
Model	SWC-350L	SWC-600L	SWC-800L	SWC-1200L
Material	High Strength Aluminum, Sandblast Finished			
Door Type Applicable	Wooden / Glass / Metal / Fireproof door			
Opening Mode	90 Degree Door			
Application of lock	SWC-350XX	SWC-600XX	SWC-800XX	SWC-1200XX
Weight	0.14KG	0.27KG	0.33KG	0.58KG

Electro-magnetic Lock Bracket (U Type)



Model	SWC-350UB	SWC-600UB	SWC-800UB
Material	High Strength Aluminum, Sandblast Finished		
Door Type Applicable	Frameless Glass door		
Opening Mode	90 Degree Door		
Application of lock	SWC-350XX	SWC-600XX	SWC-800XX
Weight	0.25KG	0.32KG	0.47KG

Electro-magnetic Lock Bracket (ZL Type)



Model	SWC-350ZL	SWC-600ZL	SWC-800ZL	SWC-1200ZL
Material	High Strength Aluminum, Sandblast Finished			
Door Type Applicable	Wooden / Glass / Metal / Fireproof door			
Opening Mode	90 Degree Door			
Application of lock	SWC-350XX	SWC-600XX	SWC-800XX	SWC-1200XX
Weight	0.5KG	0.75KG	0.82KG	1.3KG

Electro-magnetic Lock Bracket (G Type)



Model	SWC-600GB
Material	High Strength Aluminum, Sandblast Finished
Door Type Applicable	Wooden / Glass / Metal / Fireproof door
Opening Mode	90 Degree Door
Application of lock	SWC-600XX
Weight	0.45KG

Electro-magnetic Lock Bracket (F Type)



Model	SWC-600FB
Material	High Strength Aluminum, Sandblast Finished
Door Type Applicable	Fully Frameless Glass Door
Opening Mode	90 Degree Door
Application of lock	SWC-600XX
Weight	0.85KG

* Weight and Size are Only Approximation and May be Modified Without Prior Notification.



www.smartworld.ae



Note: Please carefully read User Manual before usage